

4

3

2

1

B

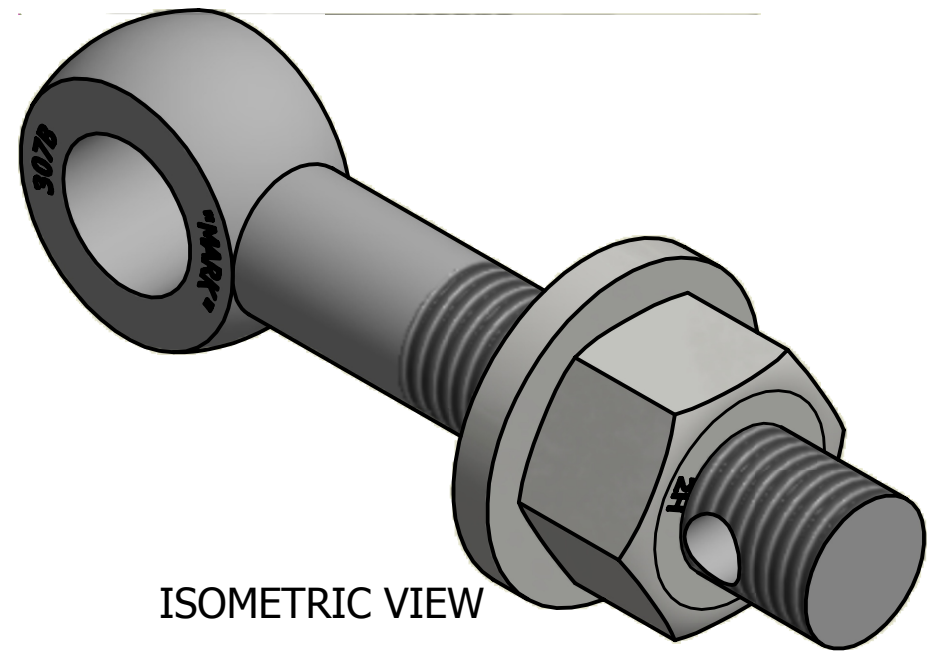
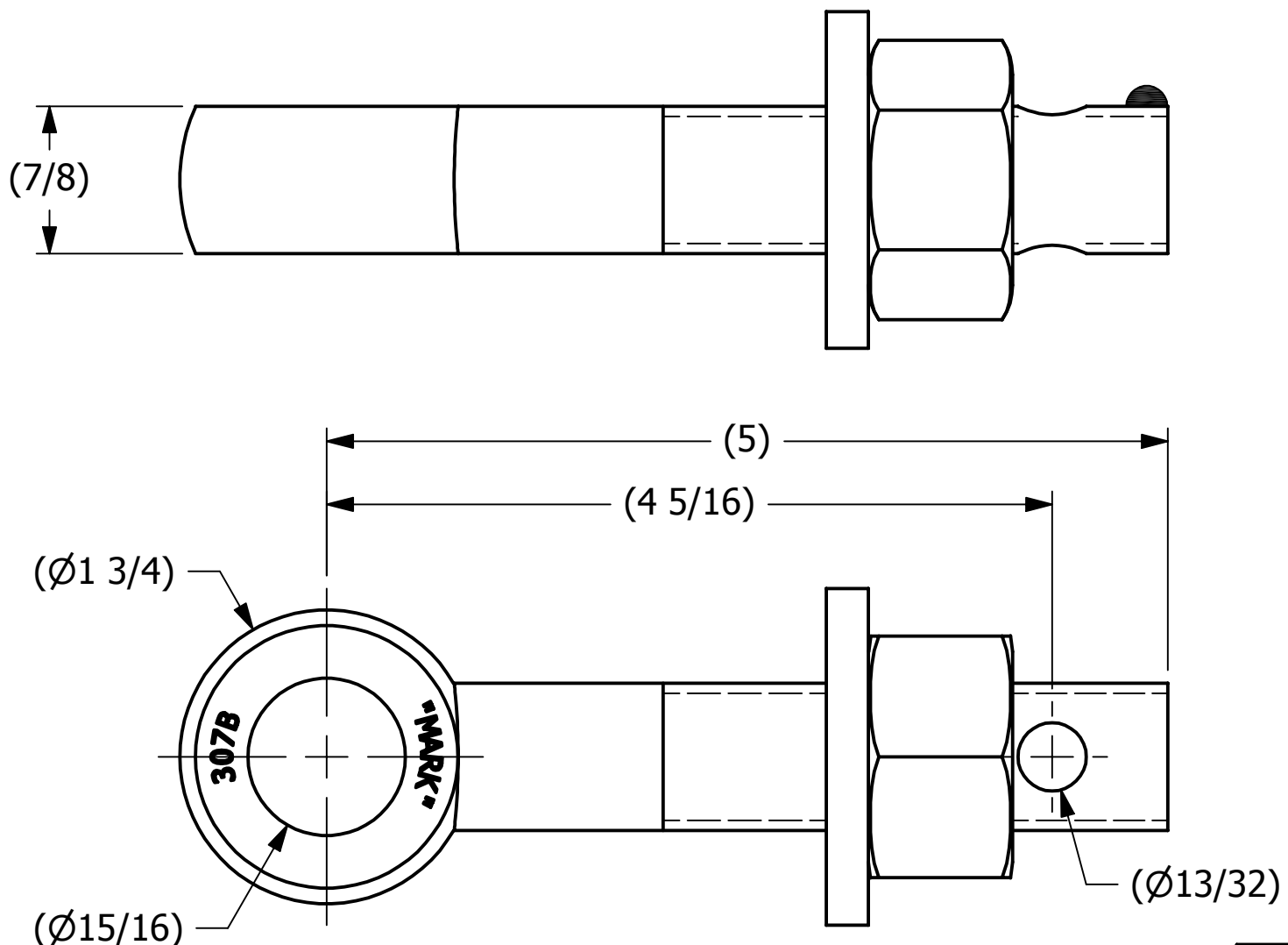
B

A

A

SALES DRAWING

SALES DRAWING



REV	BY	DATE	DESCRIPTION
C	JJK	5-9-14	UPDATED EYEBOLT OD
B	CHL	6-10-02	CHANGED MATERIAL WASH78T FROM CS Z/P
A	FOD	8-5-99	UPDATED BOM, ITEM #1 WAS EB785H

UNLESS OTHERWISE SPECIFIED DIMENSIONAL TOLERANCES FRACTIONAL: $\pm 1/16$ X.XX: $\pm .03$ X.XXX: $\pm .015$ ANGULAR: $\pm 1^\circ$ DEBURR ALL SHARP EDGES. ALL MACHINED SURFACES TO HAVE A 125 RMS FINISH UNLESS NOTED OTHERWISE. THIRD ANGLE PROJECTION	DRAWN BY:	FOD
	CHECKED BY:	SAB
	PROTOTYPE BY:	FOD
	PROTOTYPE DATE:	5/28/1999
	APPROVED FOR PRODUCTION BY:	SAB
	PRODUCTION DATE:	5/28/1999

SALCO PRODUCTS, INC.		
PART NAME: EYEBOLT ASSEMBLY 7/8"X5"		
MATERIAL: CARBON STEEL		
PROJECT #:	SHEET #: 1 OF 1	SCALE: 1:1
DRAWING #: B13497	PART #: EB785XHA	

THIS PRINT, PROPERTY OF SALCO PRODUCTS INC., CONTAINS PROPRIETARY INFORMATION AND MUST NOT BE COPIED, REPRODUCED, OR USED DETRIMENTALLY TO OUR INTEREST.